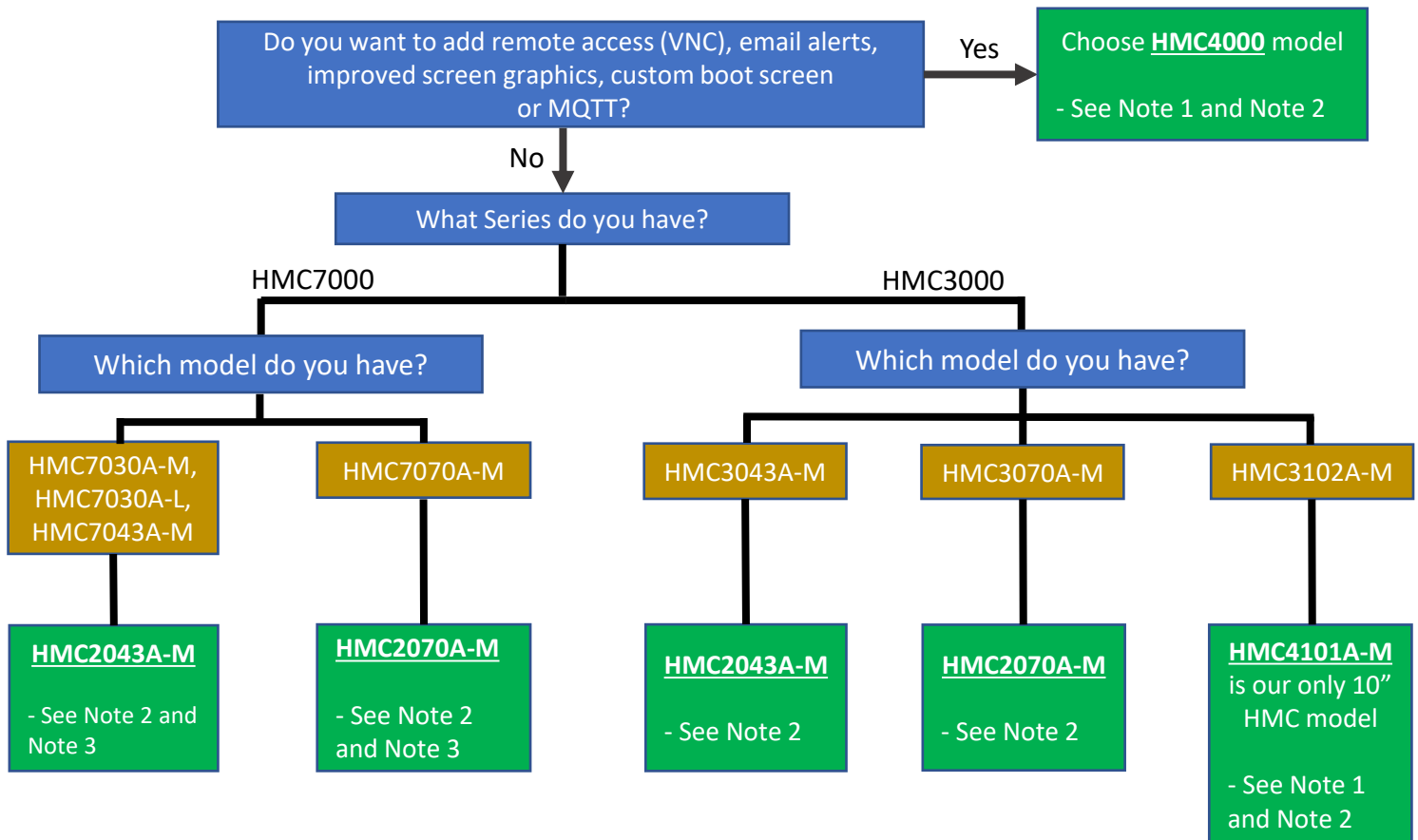


Converting from HMC3000 or HMC7000 units to HMC2000 or HMC4000 unit



Conversion Notes

1. When choosing a HMC4000 models, You will need to re-create your project (screens and programming logic) in MAPware for this new unit, there is no automatic conversion since it has been built on a new hardware platform.

- Logic blocks from the HMC3000/HMC7000 models can be exported as an .xml file and then imported in HMC4000 model project. This will automatically add tags and function block instances referenced in the block to the new project.
 - Logic can also be directly copied from one open project to another but this method will not automatically add the tags to the database.
- Other tags can be exported from HMC3000/HMC7000 project as a .csv file and then imported in HMC4000 model project.
- Screens will need to be recreated. Screens cannot be imported and screen objects cannot be directly copied from HMC7000/3000/2000 series to HMC4000 series.

2. If you programmed your previous units with Native Ladder, your project cannot be automatically converted into any of the HMC2000 or HMC4000 models as the Native Ladder programming method has been discontinued.

- The screens for your Native Ladder project can be directly copied to an HMC2000 series by selecting all objects on a screen and pasting into the new project. All screen object tag references will have to be redefined.

3. When converting from an HMC7000 unit to an HMC2000 unit, the I/O modules that plug into the back of the unit will be physically different (see the HMC3 I/O modules for available options). Screen objects and IEC logic can be copied over to the new project but any Native Ladder logic or tags related to I/O modules will need to be re-created. The conversion process within MAPWare-7000 will explain any tag, or project issues to help you identify what to update.